

# Lower Thames Crossing

## 9.146 Accompanied Site Inspection 4: Visit to HS2 Chiltern site - Support Information

Infrastructure Planning (Examination  
Procedure) Rules 2010

Volume 9

**DATE: October 2023**  
**DEADLINE: 6**

Planning Inspectorate Scheme Ref: TR010032  
Examination Document Ref: TR010032/EXAM/9.146

**VERSION: 1.0**

# Lower Thames Crossing

## 9.146 Accompanied Site Inspection 4: Visit to HS2 Chiltern site - Support Information

### List of contents

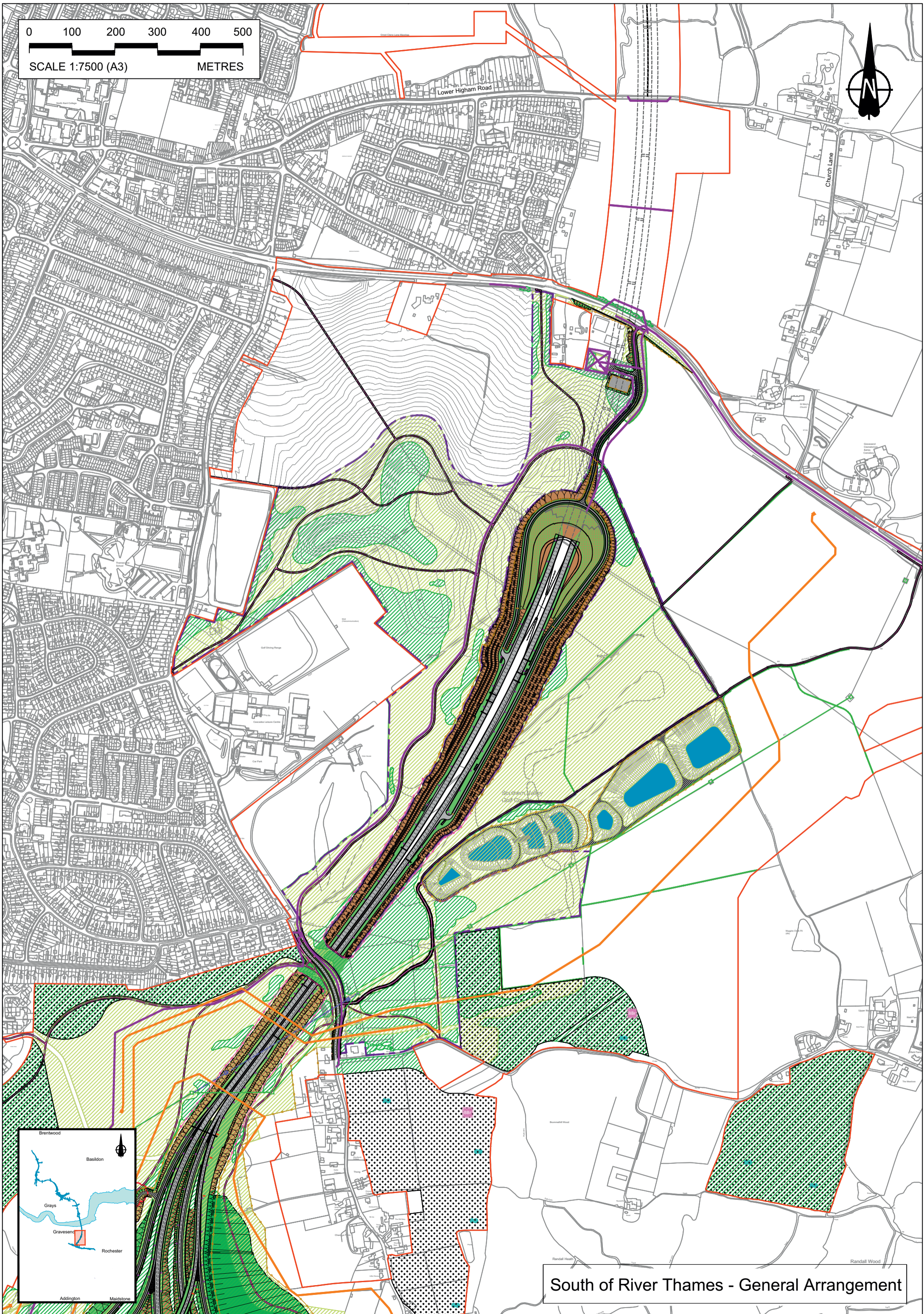
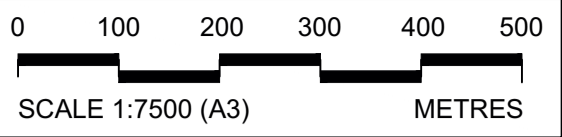
	Page number
<b>1 Introduction .....</b>	<b>1</b>
<b>2 Schedule of Plans included in this application document .....</b>	<b>2</b>

# 1 Introduction

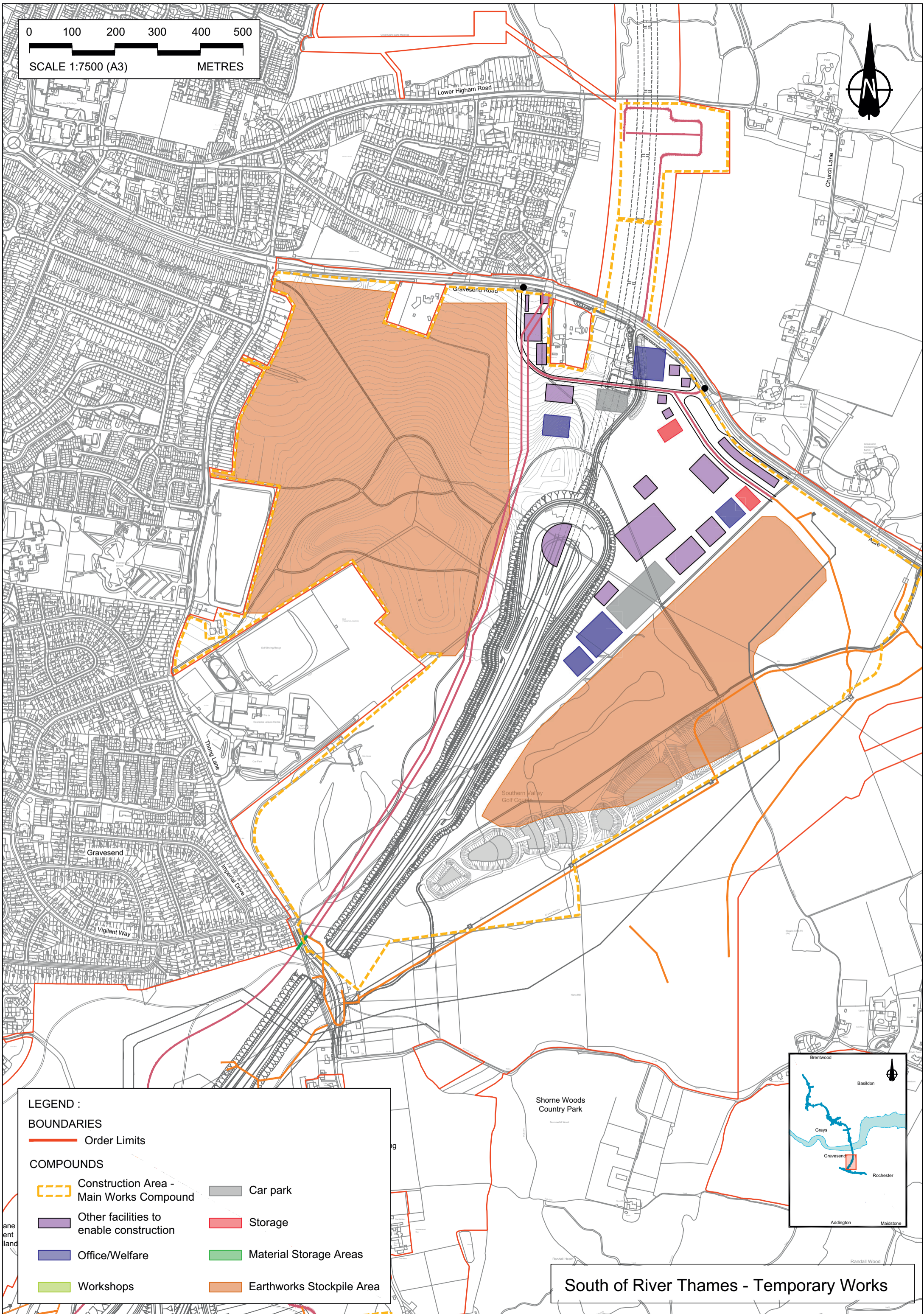
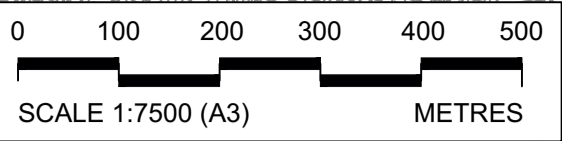
- 1.1.1 This document is submitted to the Planning Inspectorate on behalf of the Secretary of State in relation to an application made by National Highways (the Applicant) under section 37 of the Planning Act 2008.
- 1.1.2 The Application is for the grant of development consent for the A122 Lower Thames Crossing. Should development consent be granted, the draft A122 (Lower Thames Crossing) Development Consent Order (Application Document 3.1) (the draft Order”) will be made by the Secretary of State for Transport (subject to any modifications considered appropriate).
- 1.1.3 Accompanied Site Inspection 4 (ASI 4) is a site visit to the HS2 Chiltern Tunnel Compound, a site external to LTC Project, where a tunnel is currently being constructed by the use of a tunnel boring machine. The detailed itinerary and any relevant details to the site are HS2 Ltd responsibility.
- 1.1.4 This document provides additional support information to the ASI providing a large scale general arrangement plans of LTC South and North Portals and a simplified temporary works plans of LTC South and North Portals
- 1.1.5 These plans show the same information and design as shown within the General Arrangement Plans [[REP4-031](#)] and the Temporary Works Plans [[REP4-084](#)] at a larger scale so the portals can be displayed in one single sheet.

## 2 Schedule of Plans included in this application document

Title
South of River Thames – General Arrangement
South of River Thames – Temporary Works
North of River Thames – General Arrangement
North of River Thames – Temporary Works



South of River Thames - General Arrangement



**LEGEND :**

**BOUNDARIES**

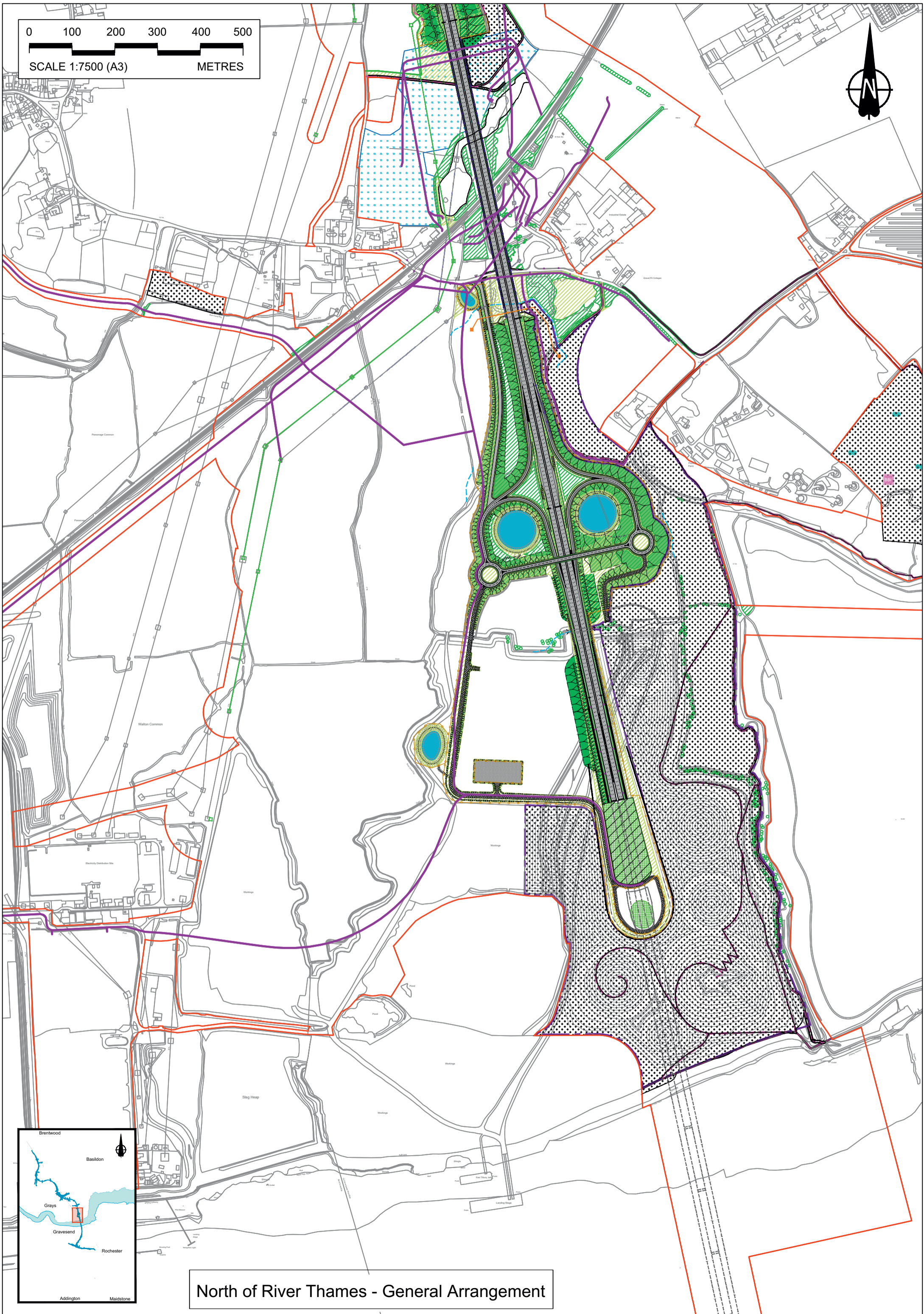
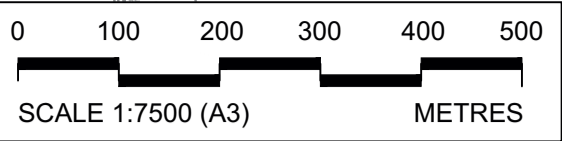
- Order Limits

**COMPOUNDS**

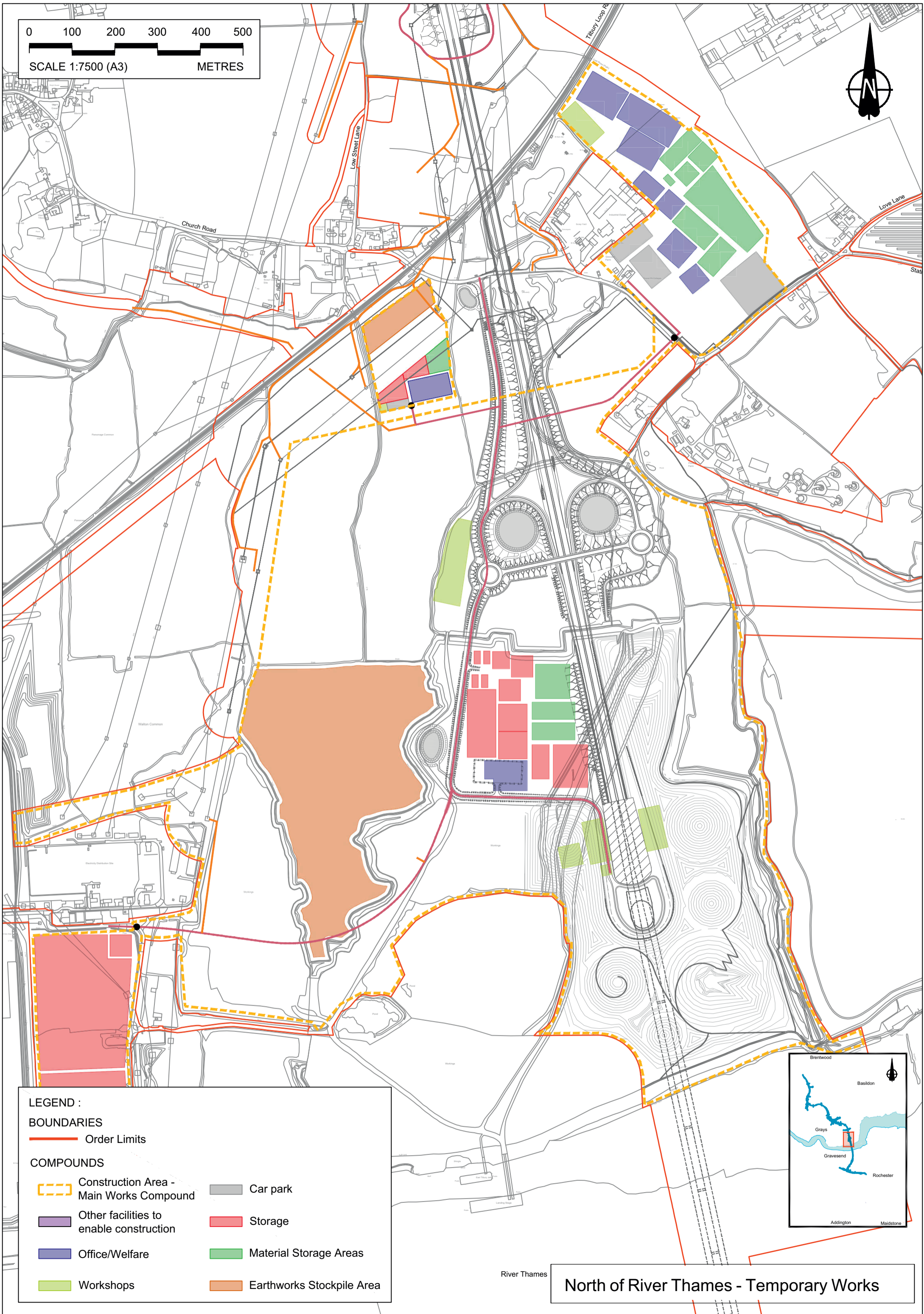
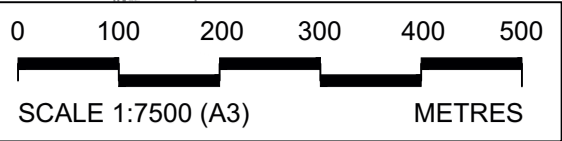
Construction Area - Main Works Compound	Car park
Other facilities to enable construction	Storage
Office/Welfare	Material Storage Areas
Workshops	Earthworks Stockpile Area



South of River Thames - Temporary Works



North of River Thames - General Arrangement



**LEGEND :**

**BOUNDARIES**

— Order Limits

**COMPOUNDS**

Construction Area - Main Works Compound	Car park
Other facilities to enable construction	Storage
Office/Welfare	Material Storage Areas
Workshops	Earthworks Stockpile Area



River Thames

**North of River Thames - Temporary Works**



If you need help accessing this or any other National Highways information, please call **0300 123 5000** and we will help you.

© Crown copyright 2023.

You may re-use this information (not including logos) free of charge in any format or medium, under the terms of the Open Government Licence. To view this licence:

visit [www.nationalarchives.gov.uk/doc/open-government-licence/](http://www.nationalarchives.gov.uk/doc/open-government-licence/)

write to the **Information Policy Team, The National Archives, Kew, London TW9 4DU**, or email [psi@nationalarchives.gsi.gov.uk](mailto:psi@nationalarchives.gsi.gov.uk).

Mapping (where present): © Crown copyright and database rights 2023 OS 100030649. You are permitted to use this data solely to enable you to respond to, or interact with, the organisation that provided you with the data. You are not permitted to copy, sub-licence, distribute or sell any of this data to third parties in any form.

If you have any enquiries about this publication email [info@nationalhighways.co.uk](mailto:info@nationalhighways.co.uk) or call **0300 123 5000\***.

\*Calls to 03 numbers cost no more than a national rate call to an 01 or 02 number and must count towards any inclusive minutes in the same way as 01 and 02 calls.

These rules apply to calls from any type of line including mobile, BT, other fixed line or payphone. Calls may be recorded or monitored.

Printed on paper from well-managed forests and other controlled sources when issued directly by National Highways.

Registered office Bridge House, 1 Walnut Tree Close, Guildford GU1 4LZ

National Highways Limited registered in England and Wales number 09346363